

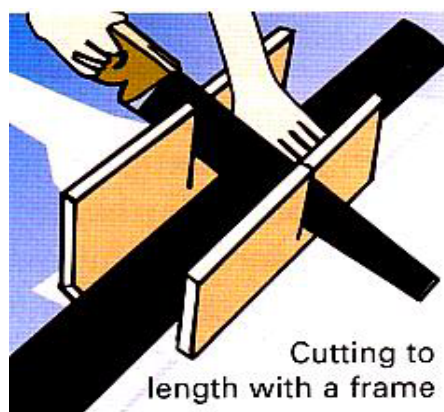
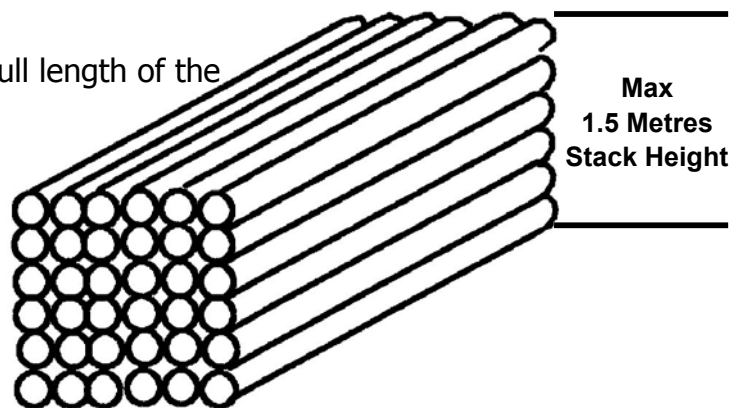
Installation Guidelines

1. Transportation and Storage

Ostendorf pipes must not be bent during transport. The full length of the pipes must be supported during transportation.

The pipes are to be laid down in such a manner that no damage occurs through deformation.

Sockets must be unencumbered all around. At the construction site, stacking should not exceed 1.50 metres in height, even if wood is laid in between layers. Sealing elements may not be stored outside for more than two (2) years.



2. Cutting pipes to length

The pipes can be cut to length as required with a commercial pipe cutter or a fine tooth saw. The cuts are to be made at right angles to the pipe ends. A mitre box (as pictured) may be useful to ensure a straight cut.

3. Connections

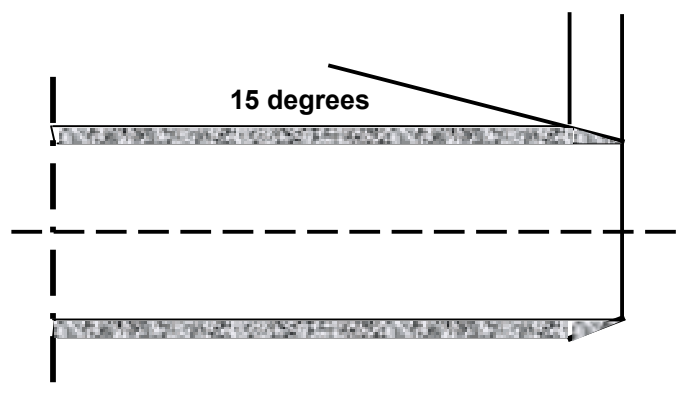
The cut edges must be trimmed and free from burrs and damage on both the inside and outside of the pipe.

The pipes ends must then be chamfered at an angle of approximately 15 degrees (as pictured) using either a suitable Chamfering tool as pictured (preferred) or a coarse file.

Remove any dirt or dust from the inserting end (spigot end) of the pipe, the sockets and, if necessary, the sealing elements. (rubber rings).

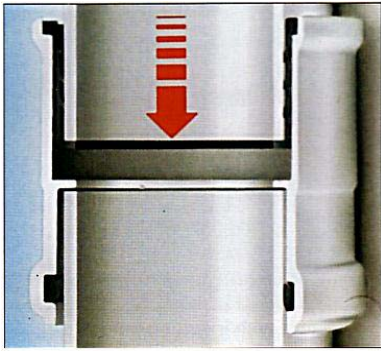
Check the position of the sealing element and make sure they are in perfect condition and not dry, split or dirty.

Coat the chamfer edge of the pipe (NOT THE RUBBER RING) evenly with a suitable lubricant. (DO NOT USE ANY OIL OR GREASE)

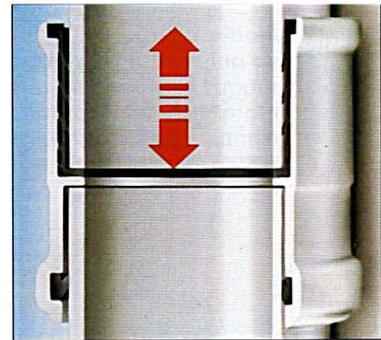


Recommended Chamfering Tool

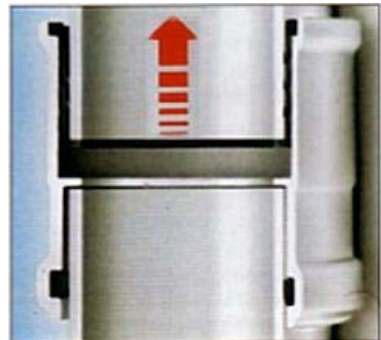
4. Securing the Connection



Push the inserting end of the pipe into the socket until it hits the stop and resists.



Make a mark on the edge of the socket with a pencil, marker or felt-tip pen.



Finally the pipe must be pulled back in accordance with the following:

HT: Between 5mm & 10mm per joint

KG2000: 3mm per metre of installed length, but a minimum of 10mm

Skolan: Between 5mm & 10mm per joint

5. Bracketing

Bracketing is the most important part of the Ostendorf system. It is vital that the brackets are installed correctly to ensure the perfect operation of the system without the possibility of leaks. Ostendorf pipes are to be installed in such a way that they are free from tension and not inhibited by changes in length. The **Ostendorf HT & KG2000** systems must be installed using the correctly sized rubber lined pipe clip to ensure no damage may occur to the material.



Ostendorf Skolan must be installed using commercial sound-absorbing pipe clamps with inserting tapes made of profile rubber to prevent any structural borne sounds.

6. Arranging the pipe clamps

- The distance between the pipe clamps in the case of horizontal pipe is approximately 10 times the outside diameter of the pipe being installed.

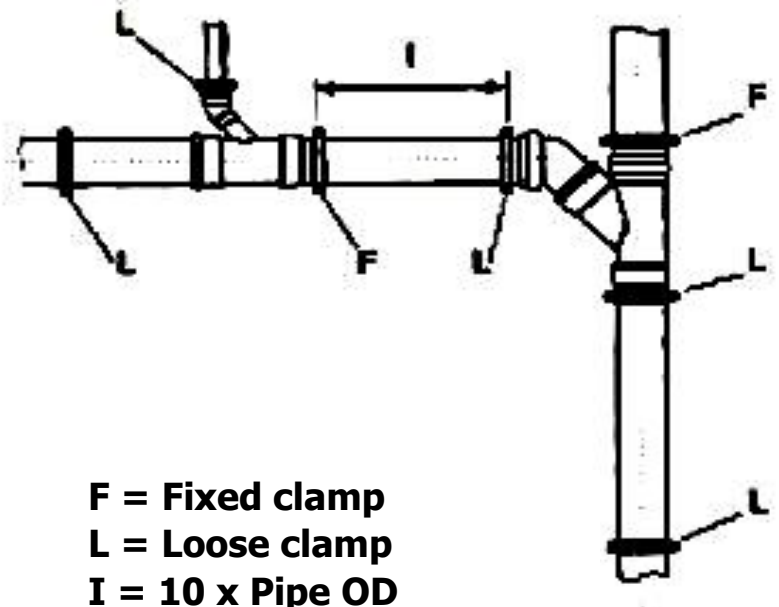
- In the case of a vertical installation, the space between clamps should be 1-2 metres, although 2 metres must not be exceeded.

- If possible, do not install pipe clamps in the direct region of pressure areas

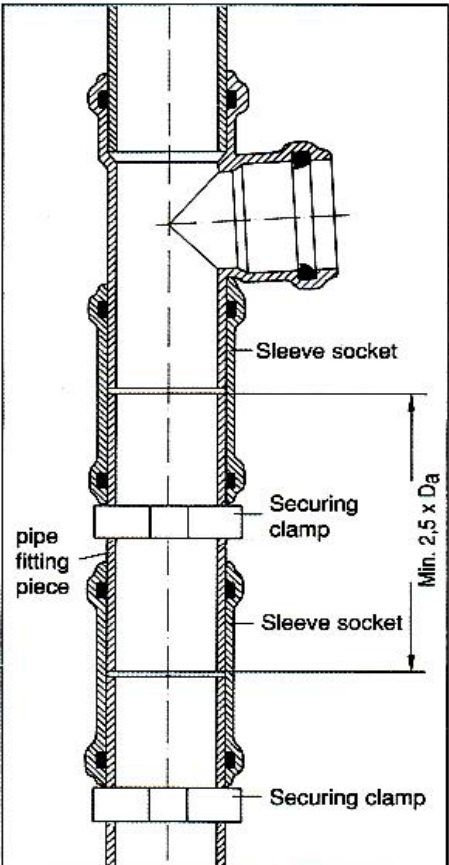
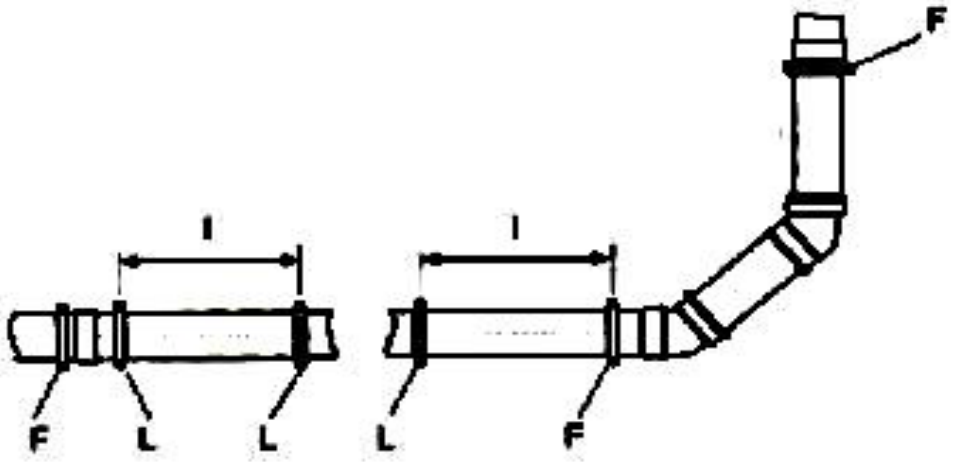
- A fixed clamp and loose clamp must be installed per pipe length.

- Fixed clamps are fixed points in the piping system. Fixed clamps are ALWAYS to be placed BEHIND the bell on the pipe. Clamps are NEVER to be placed directly onto a bell or a fitting.

- Loose clamps are to be placed at recommended intervals along the length of the pipe.



F = Fixed clamp
L = Loose clamp
I = 10 x Pipe OD



7. Subsequent Installation of piping

Subsequent connections can be done by means of the installation of a branch using sleeve sockets.

In order to install, a sufficient long piece of pipe ($L = \text{length of bell} + 2.5 \times \text{OD of pipe}$) is removed and the branch is inserted.

Cutting edges are to be cleaned and chamfered. A sleeve socket is pushed onto both the remaining pipe without a socket and onto a piece of pipe equivalent to that of the gap.

The piece is then inserted into the piping and the sleeve sockets are pushed over the cutting edges.

The sleeve sockets must then be secured by placing a clamp on the pipe piece. (As shown in picture)